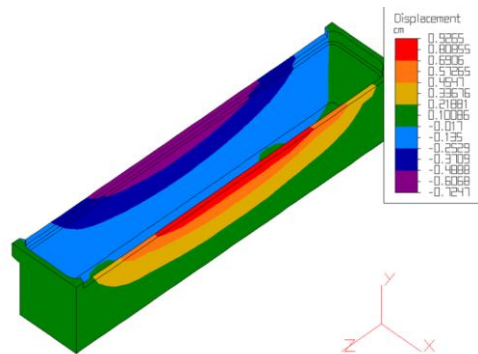


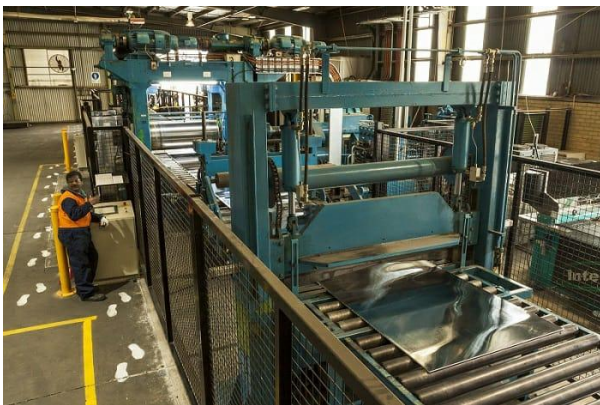
# **Portfolio of Technical Services & Supplies**

## **2024**

Fabricated exclusively for METALEX by OEMs

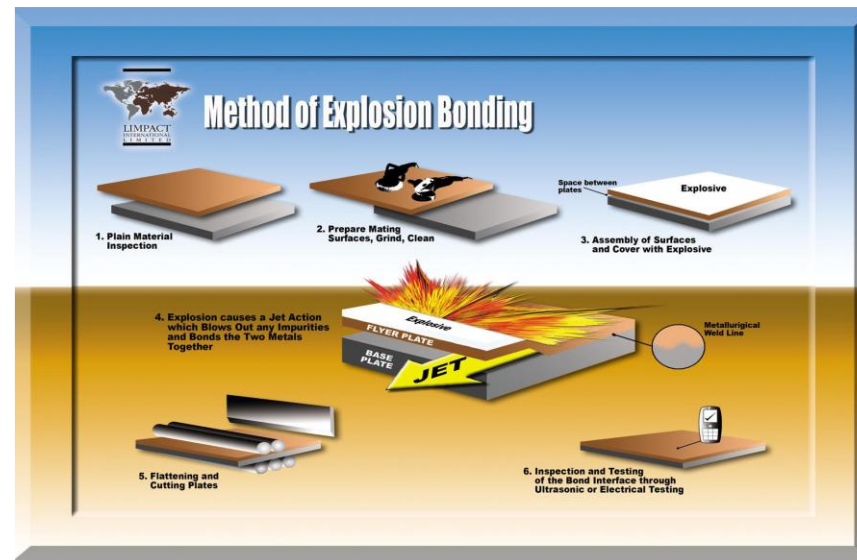


# POLYMER CONCRETE ELECTROLYTIC CELLS (Celdas electrolíticas de concreto polimérico)



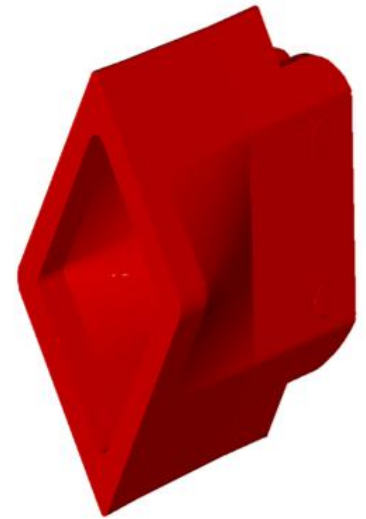
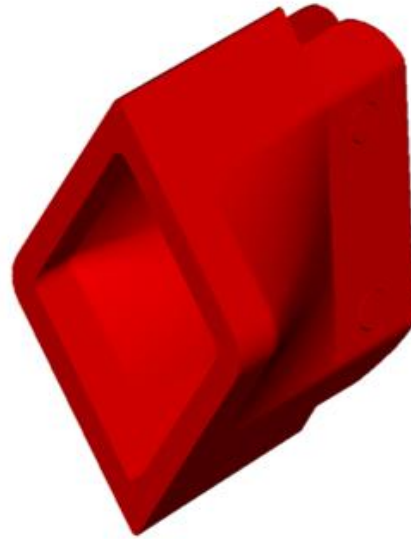
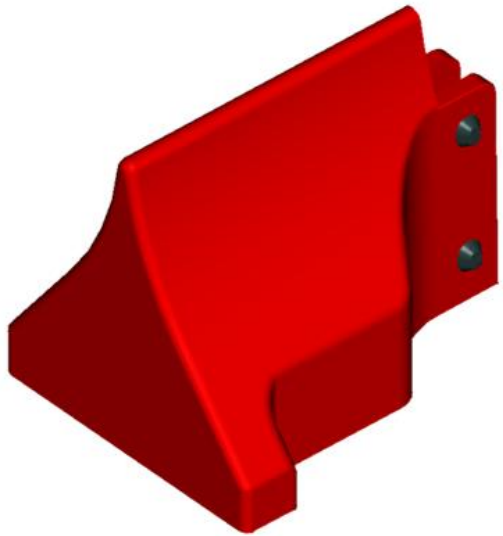
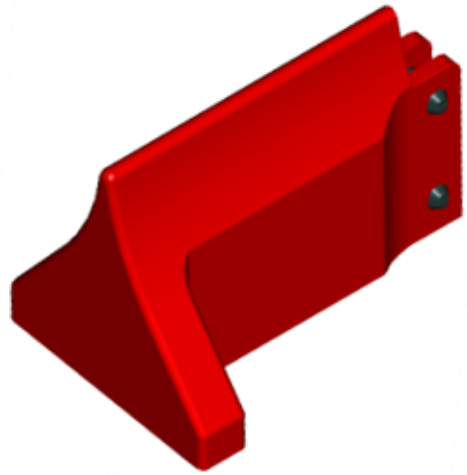
# ANODES (Anodos)

---



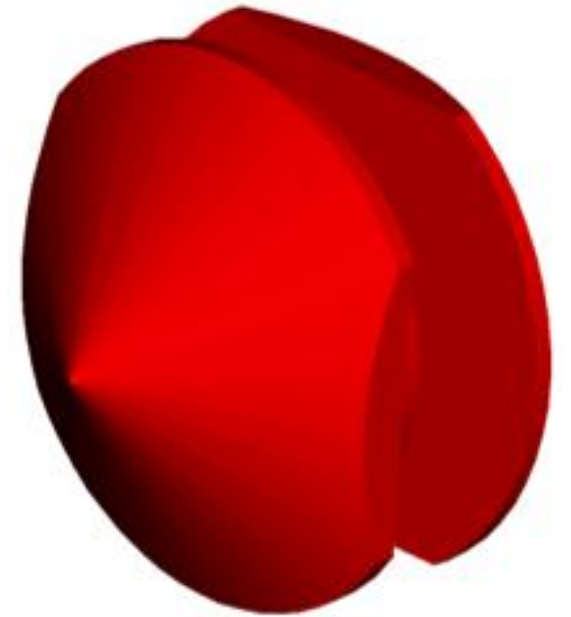
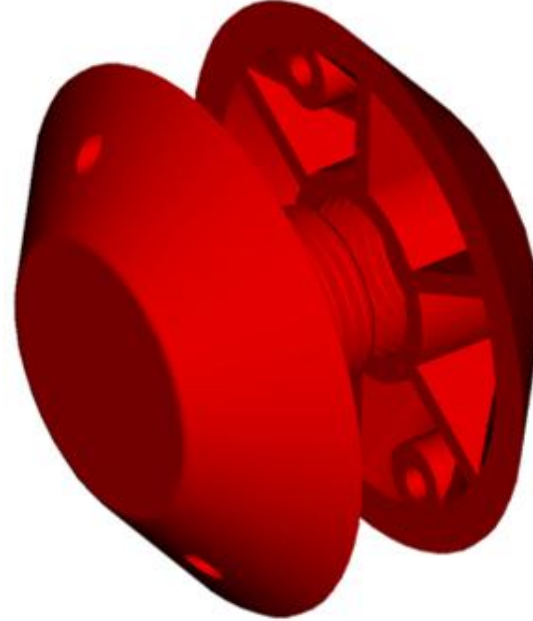
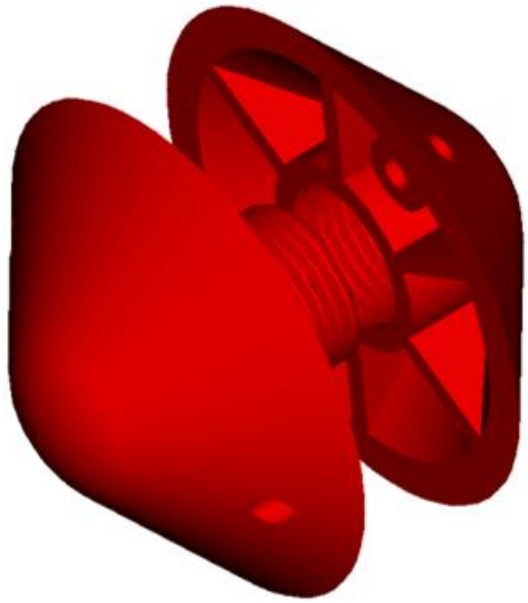
CATHODES  
(Cátodos)

---



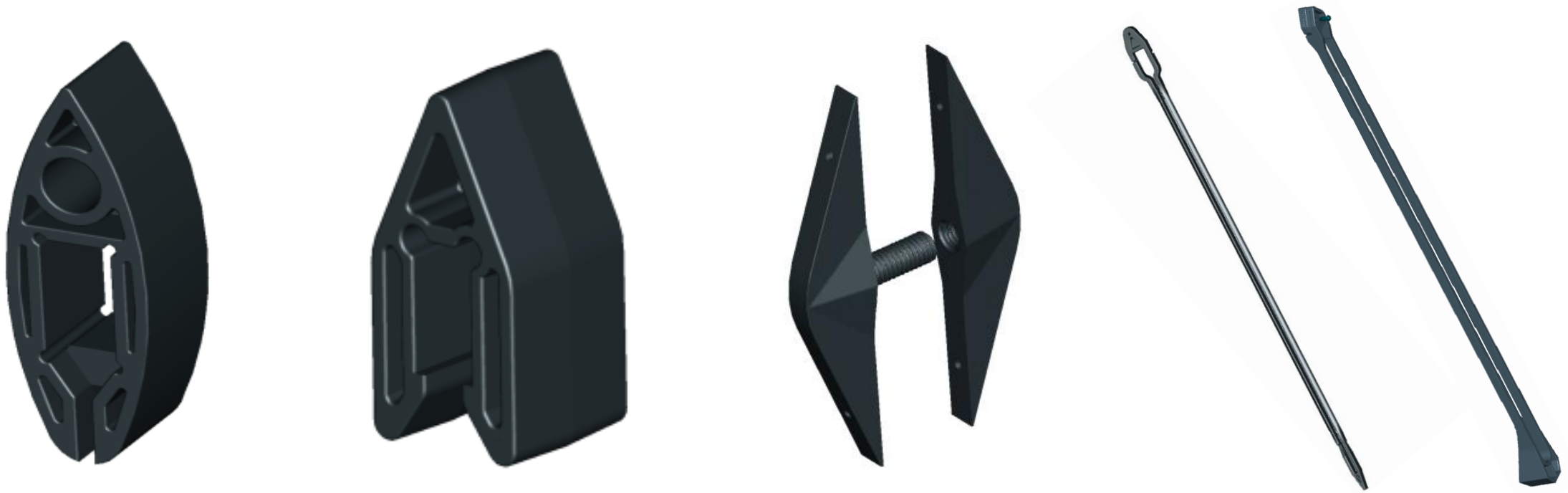
ANODE INSULATORS 1  
(Aisladores para anodos)

---



ANODE INSULATORS 2  
(Aisladores para anodos 2)

---



ANODE AND CATHODE GUIDES  
Cuias para ánodos y cátodos)

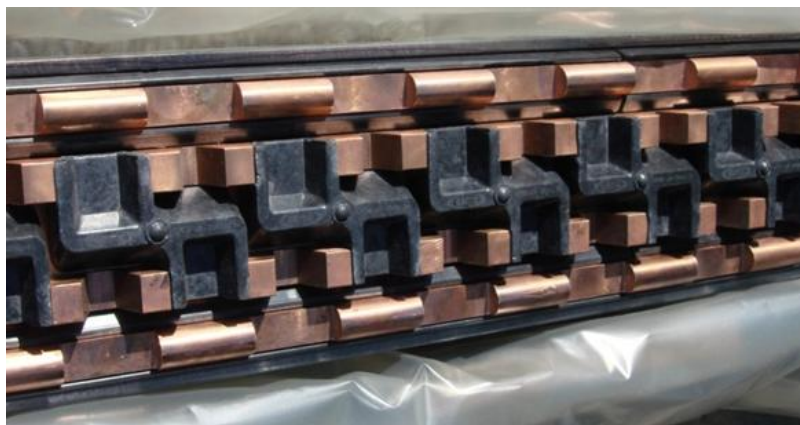
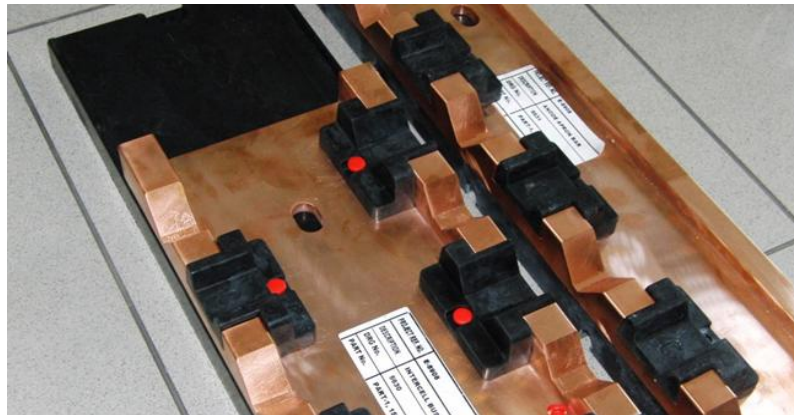
---



CELL TOP FURNITURE – Asymmetric Electrodes  
(Aisladores/Espaciadores)

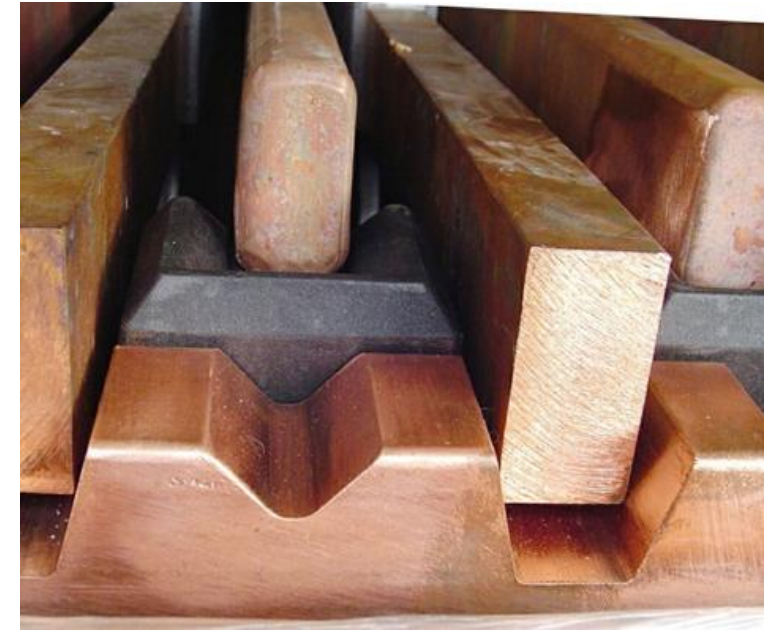
---



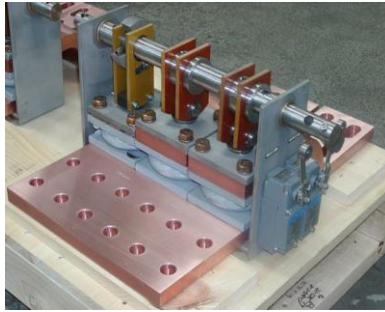
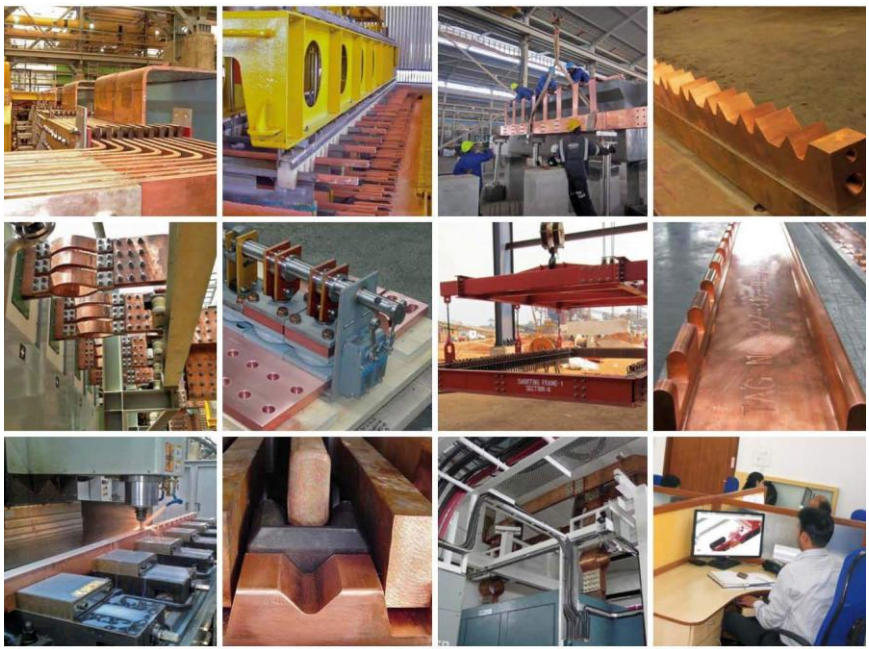


CELL TOP FURNITURE- Symmetric Electrodes  
(Aisladores/Espaciadores)

---



DC COPPER BUS BARS -  
MACHINNING  
(Barras de Corriente Contínua)



# DC COPPER BUS BARS (Barras de Corriente Contínua)



## PRODUCTION CRANES (Grúas de Producción)

---



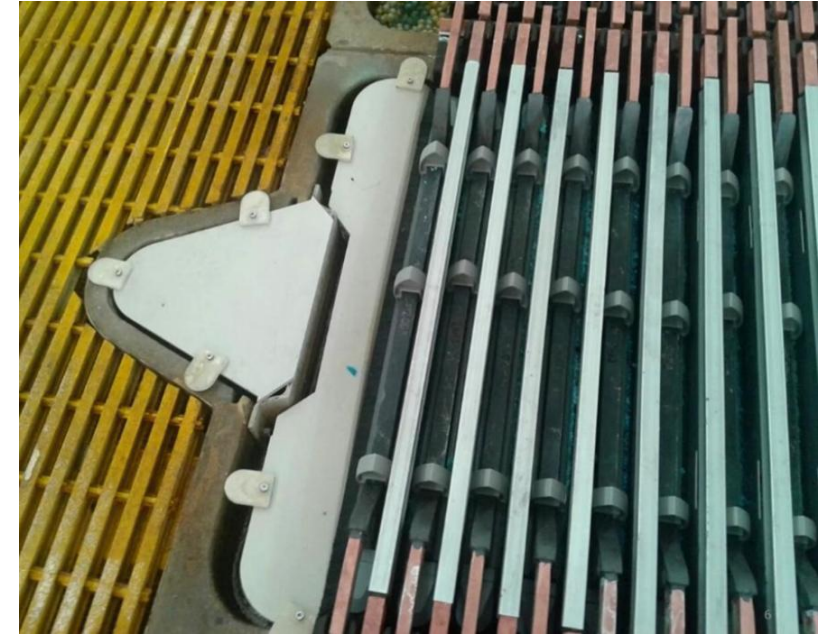
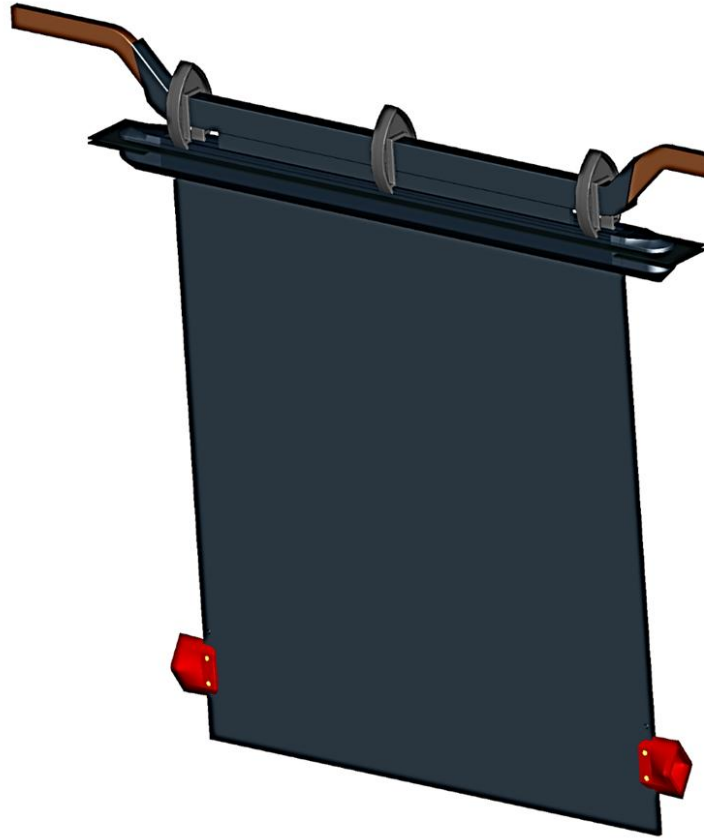
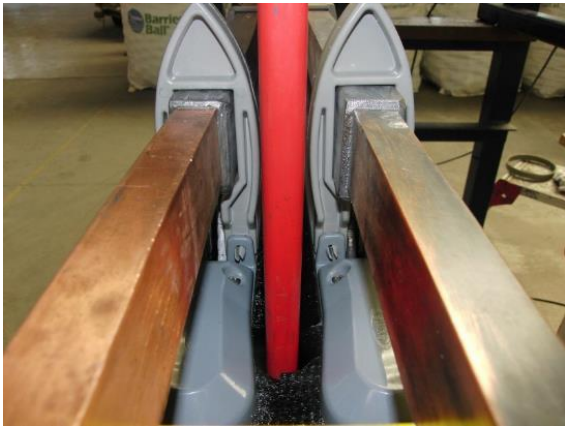
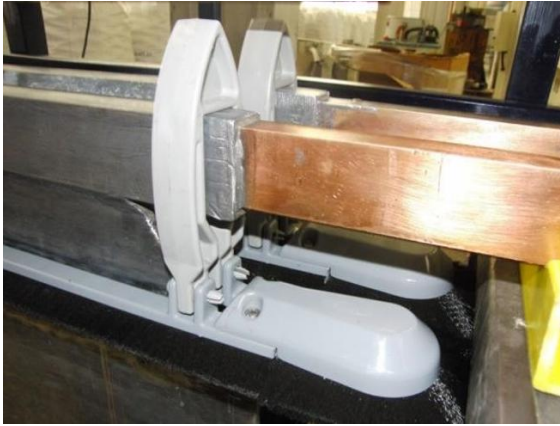
## CRANE GUIDES (Guias para gruas)

---



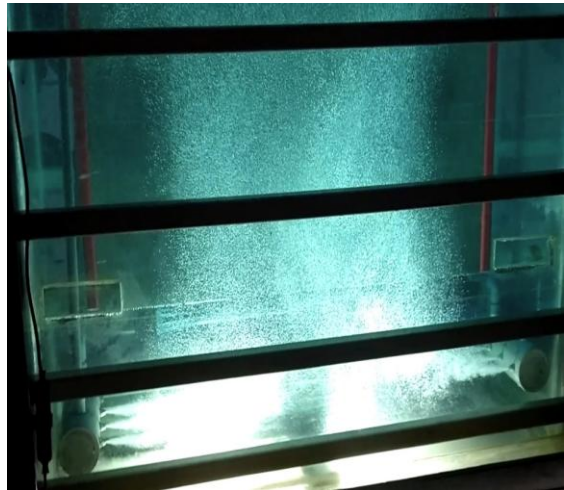
## TRANSFORMER-RECTIFIERS (Traforectificadores)

---



MIST CAPTURING - ECAP<sup>®</sup>  
(Abatimiento Neblinas- ECAP<sup>®</sup>)

---



### DIFFUSION LAYER PROFILES

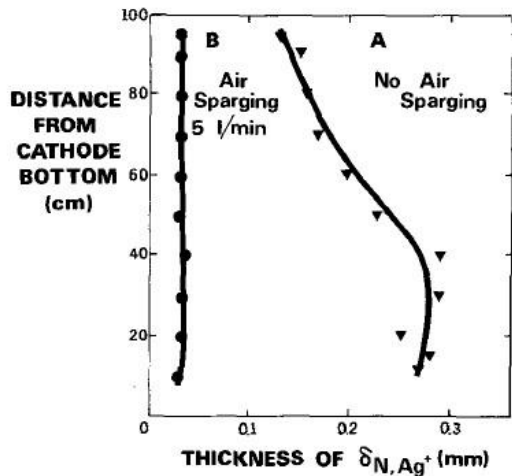
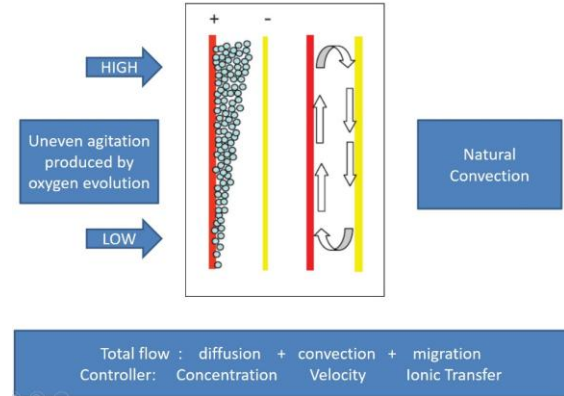


Fig. 4—Diffusion layer profiles.



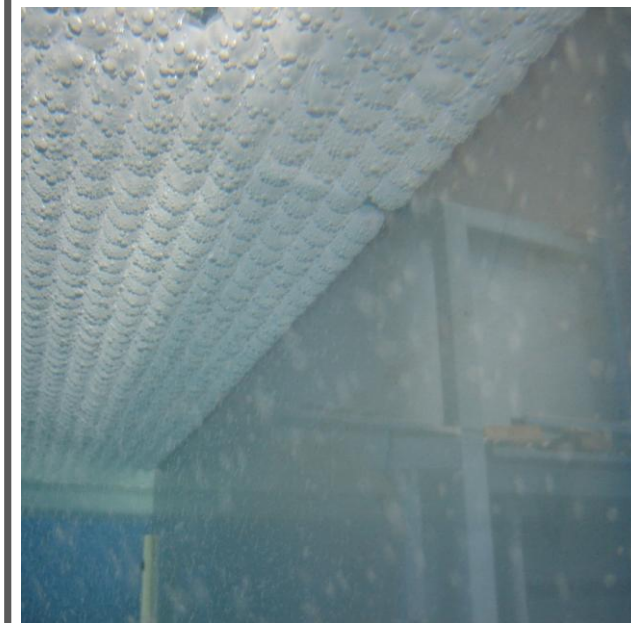
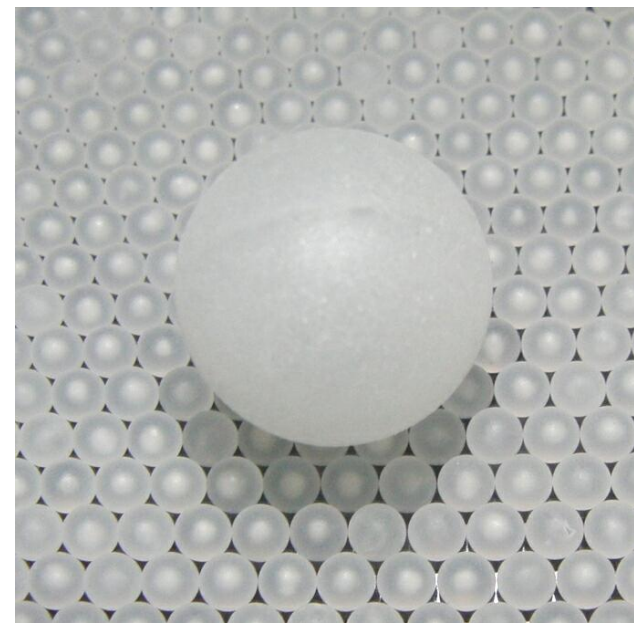
CELL HYDRODYNAMICS IMPROVEMENT - EXMAJET®  
 Mejoramiento de la hidrodinámicas de celdas - EXMAJET®





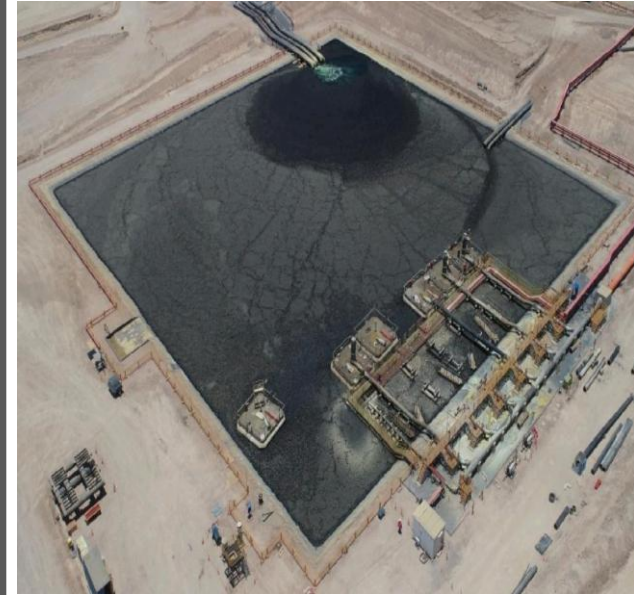
ANODE AND CATHODE FRAMES – Ni, Co & Mn EW  
Marcos para Anodos y catodos – EW de Ni, Co y Mn

---

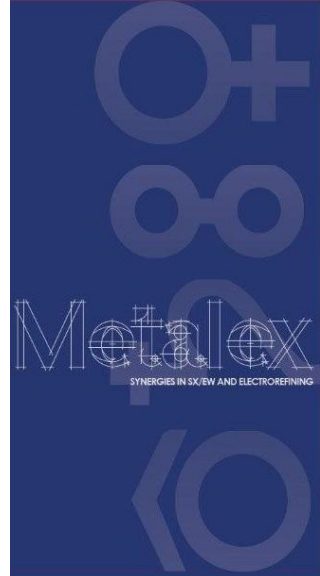


## DEMISTING HOLLOW BALLS (Esferas huecas antinebulizantes)

---



OPEN TANKS EVAPORATION REDUCTION WITH FLOATING COVERS - BARRIER BALL®  
(Reducción de evaporación en estanques abiertos - BARRIER BALL®)



[www.metalex.cl](http://www.metalex.cl)

Hernando de Aguirre 162 Oficina 806

Santiago – CHILE

Tel: +56(2) 2335 2217

Fax: +56 (2) 2321 8280

Mobile: +569 94371714

Contact: Alex R. Lillo

Email: [alillo@metalex.cl](mailto:alillo@metalex.cl)